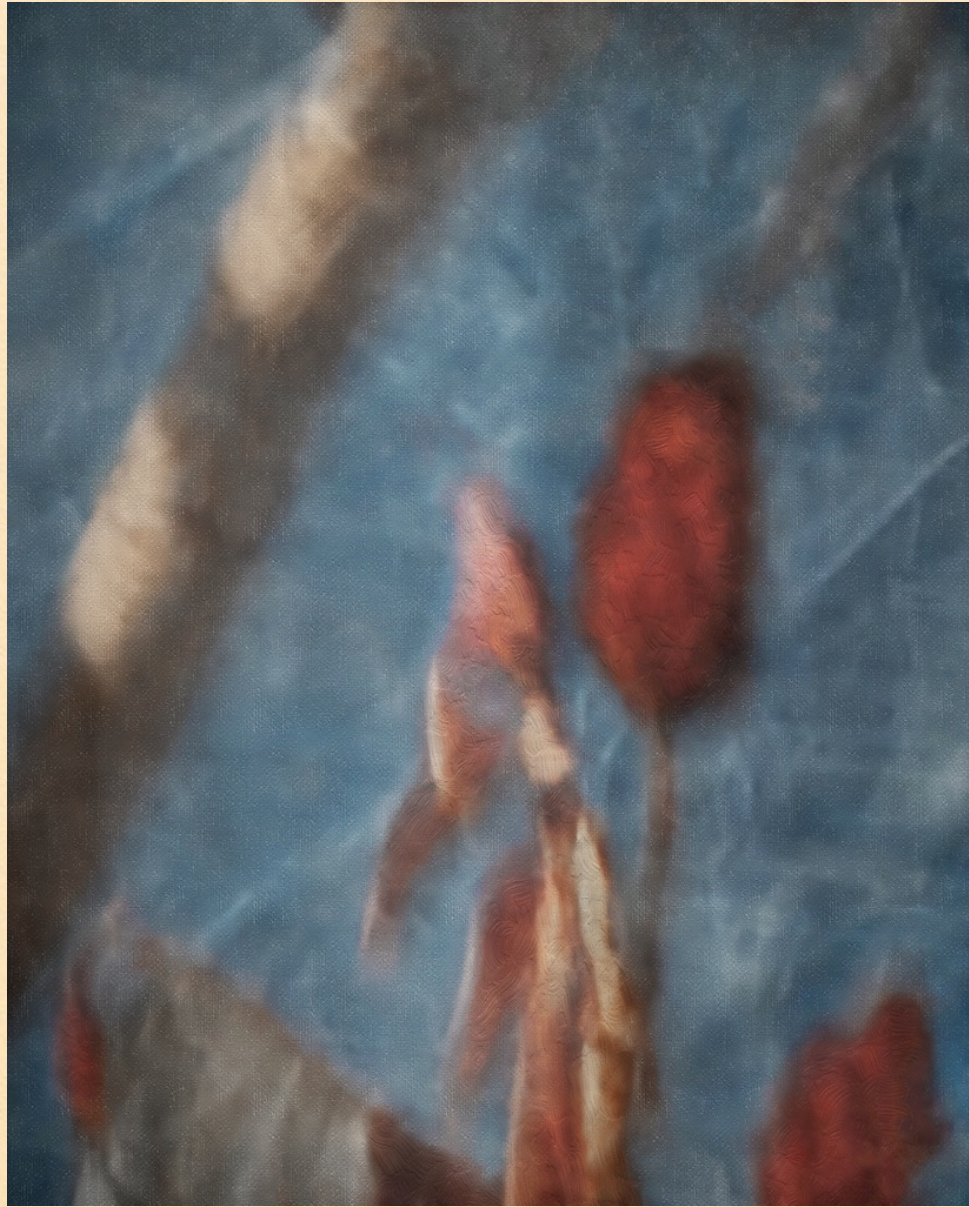


SUMAC

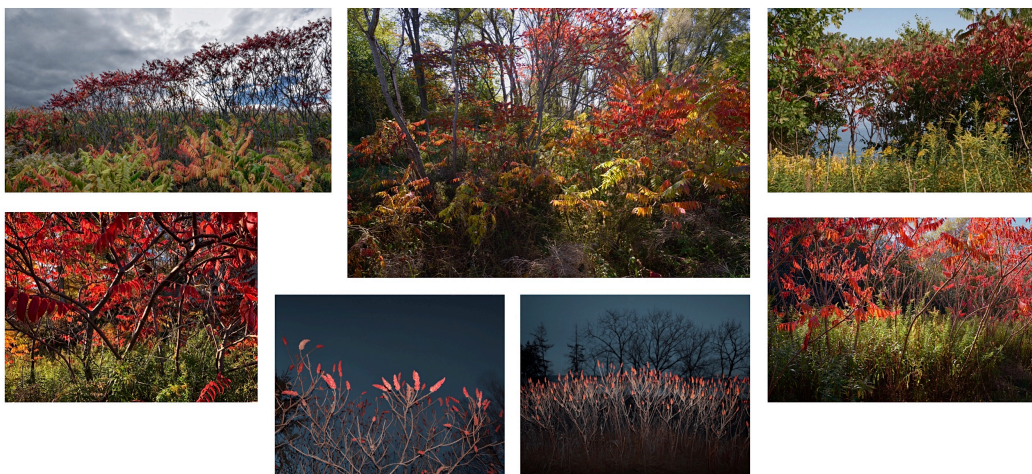


A collection of digital paintings of sumac trees

Sumac Project

For as long as I can remember, I've had a fascination with sumac trees...beautiful bunches of spindly plants that can steal your gaze.

From a distance, and in the fall, a large stand of sumacs is a glorious, dense patch of intense red-coloured leaves. As you approach, however, all this changes, and you start to get a sense of scale and see a confusing array of spindly branches and red leaves. Something has been lost by moving in close... or has it? Standing near, or right in the middle of a stand of sumac trees on a clear sunny day, the colour of the leaves against the blue sky can be magical!



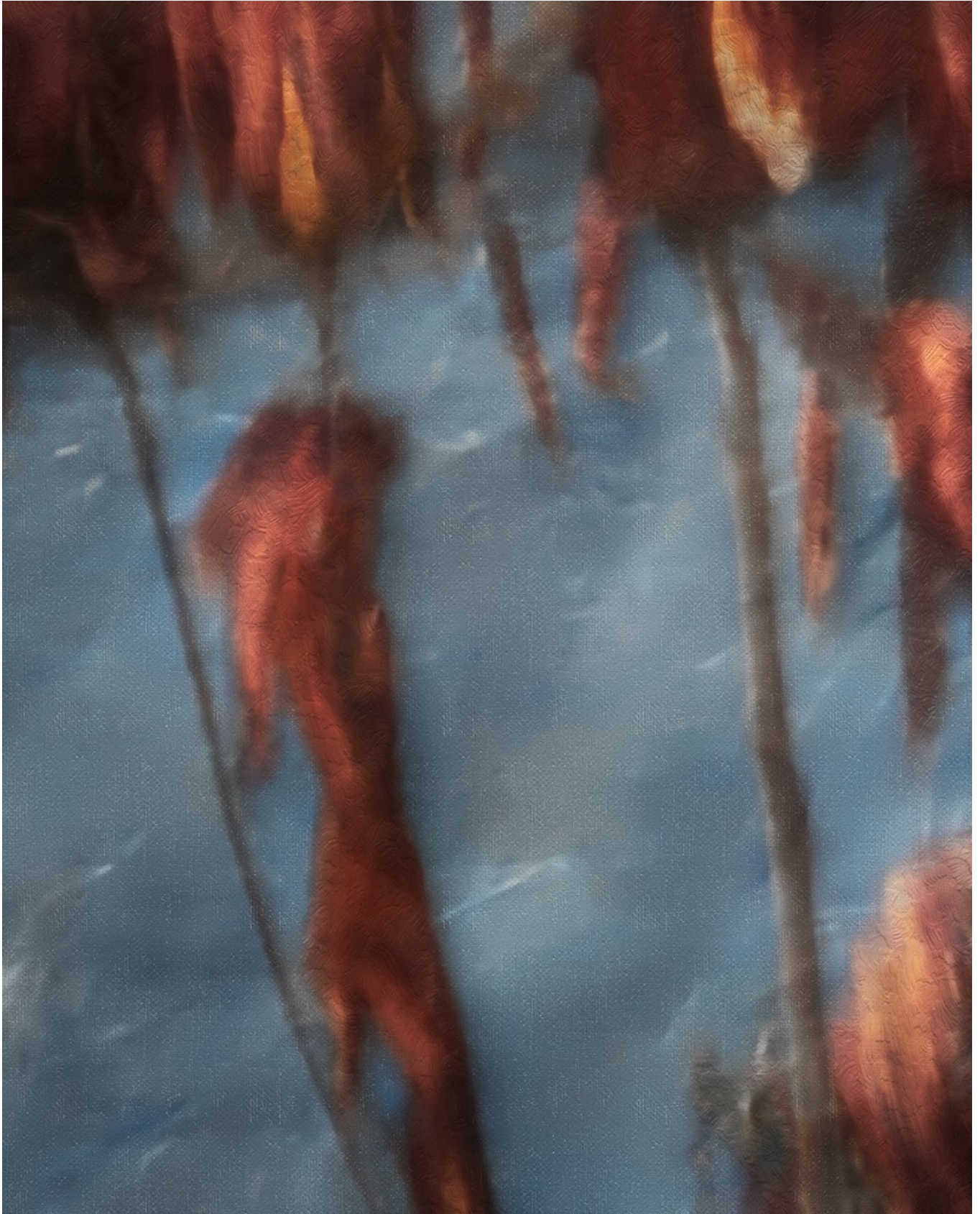
I have been making photographs of sumacs for many years and, although I've been somewhat satisfied with the resulting images, I felt I could only capture their true beauty through making paintings working digitally. I simplified my compositions to focus on textures, colour and light with the hope of creating a sense of their ethereal beauty.

Michael Christidis

Contact

w www.MichaelCArtist.com

e info@michaelcartist.com



Sumac No. 1

Archival pigment print | 20 x 16 inches | Edition of 3



Sumac No. 2

Archival pigment print | 16 x 20 inches | Edition of 3



Sumac No. 3

Archival pigment print | 20 x 16 inches | Edition of 3



Sumac No. 4

Archival pigment print | 20 x 16 inches | Edition of 3



Sumac No. 5

Archival pigment print | 16 x 20 inches | Edition of 3



Sumac No. 6

Archival pigment print | 20 x 16 inches | Edition of 3



Sumac No. 7

Archival pigment print | 20 x 16 inches | Edition of 3



Sumac No. 8

Archival pigment print | 20 x 16 inches | Edition of 3



Sumac No. 9

Archival pigment print | 16 x 20 inches | Edition of 3



Sumac No. 10

Archival pigment print | 16 x 20 inches | Edition of 3



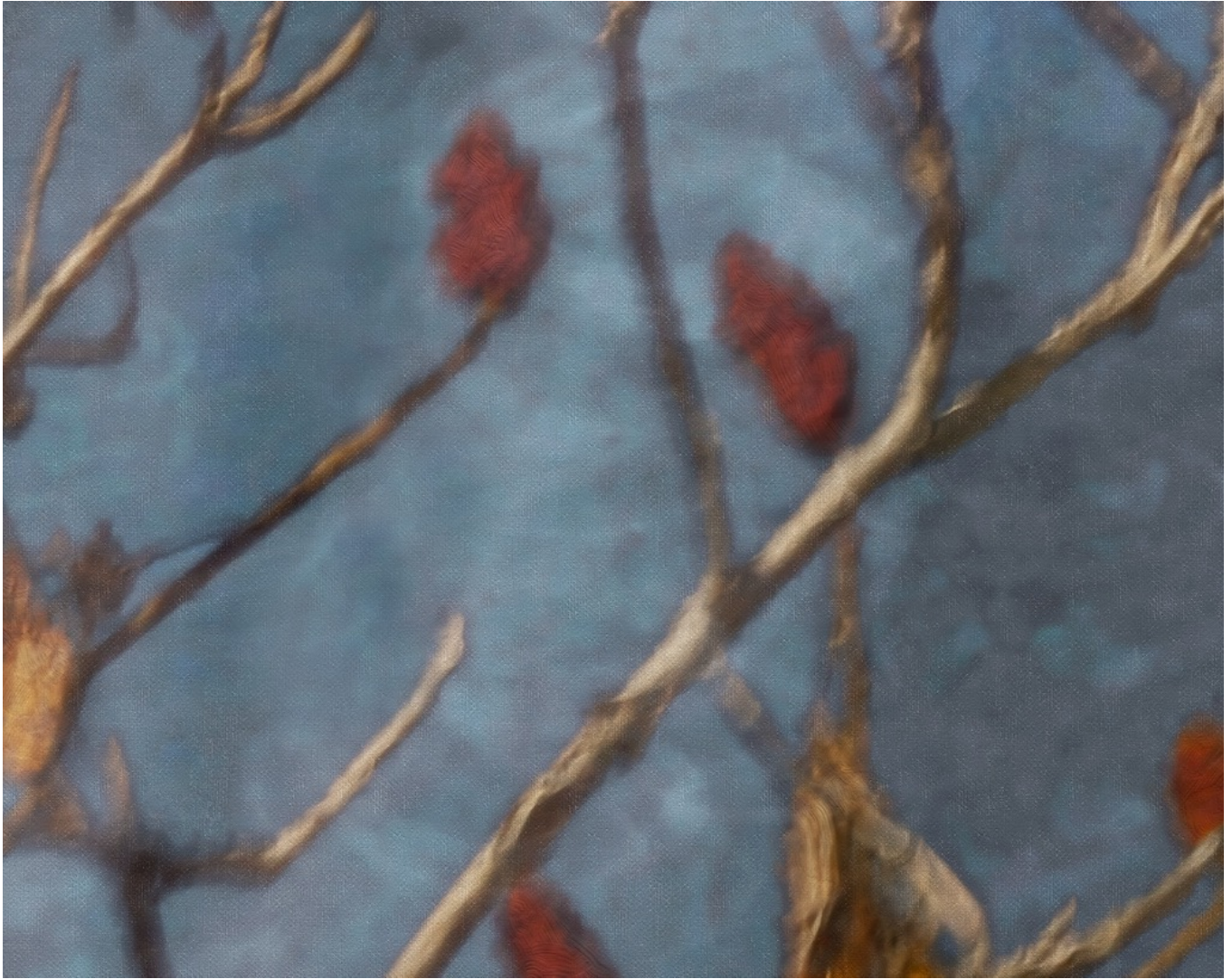
Sumac No. 11

Archival pigment print | 16 x 20 inches | Edition of 3



Sumac No. 12

Archival pigment print | 16 x 20 inches | Edition of 3



Sumac No. 13

Archival pigment print | 16 x 20 inches | Edition of 3



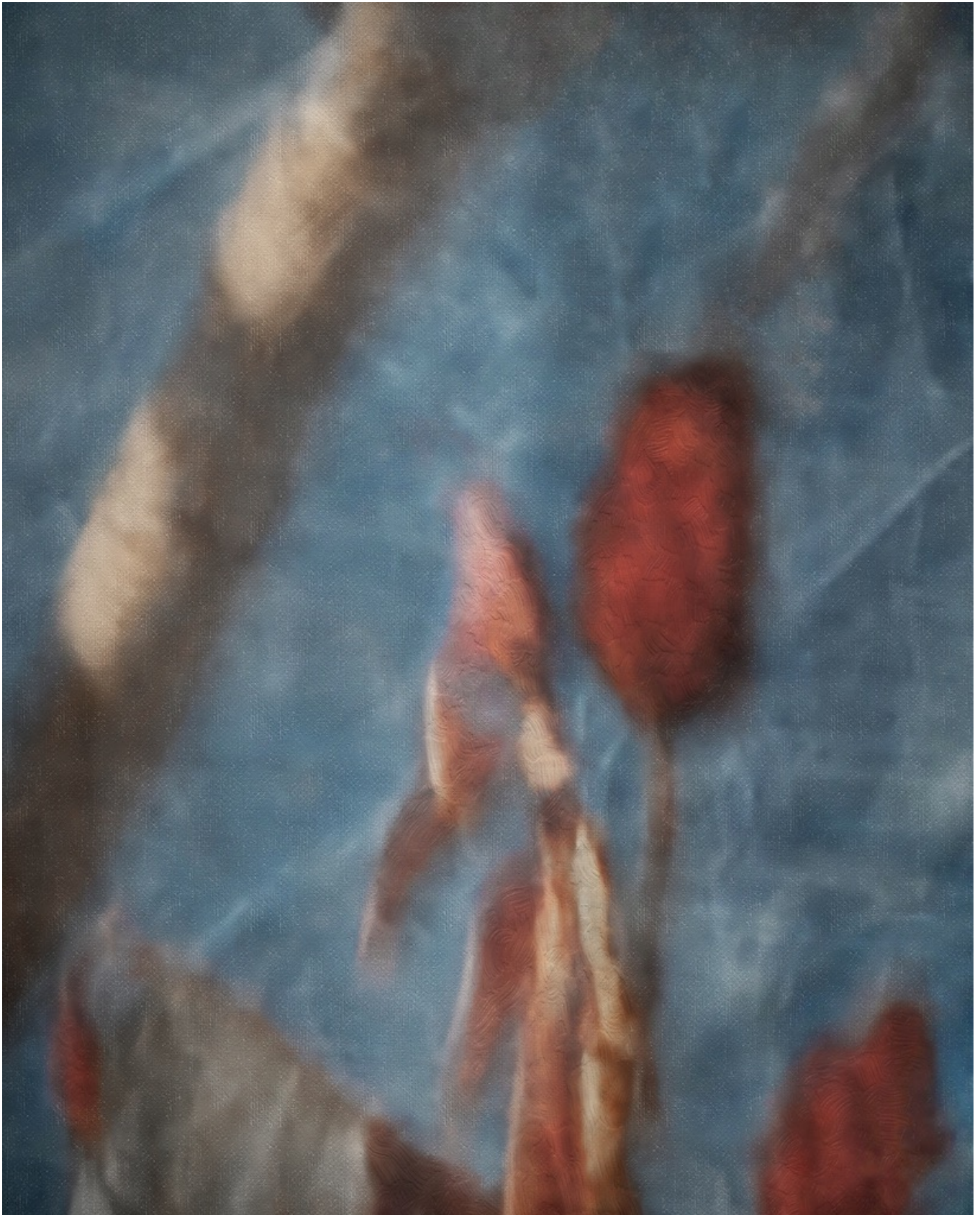
Sumac No. 14

Archival pigment print | 16 x 20 inches | Edition of 3



Sumac No. 15

Archival pigment print | 16 x 20 inches | Edition of 3



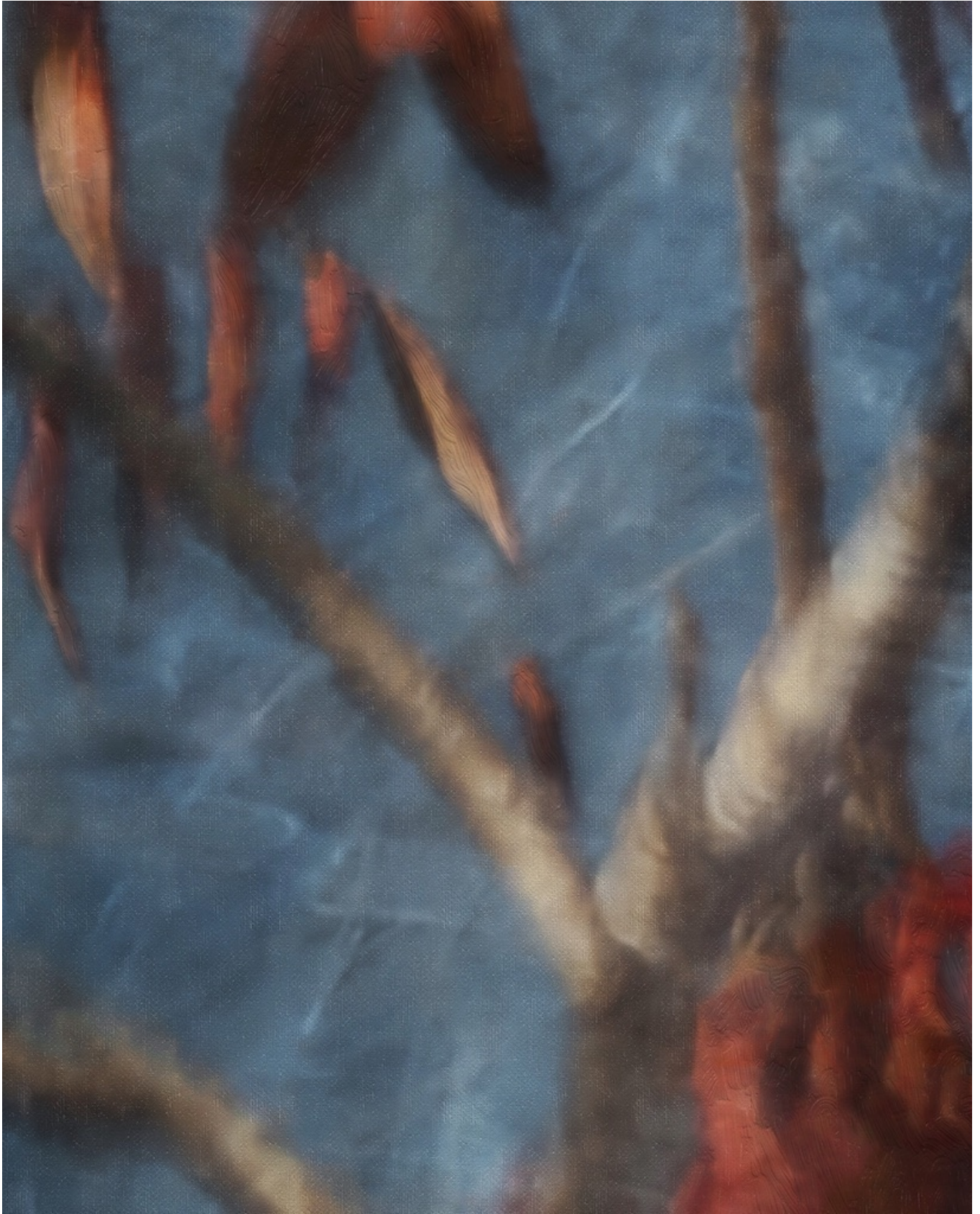
Sumac No. 16

Archival pigment print | 20 x 16 inches | Edition of 3



Sumac No. 17

Archival pigment print | 16 x 20 inches | Edition of 3



Sumac No. 18

Archival pigment print | 20 x 16 inches | Edition of 3

About

Michael Christidis is a Canadian artist who is best known for his luminous multi-layered paintings depicting wilderness landscapes and shorelines. Like many Canadians, Christidis grew up with romantic notions of the Canadian landscape and a respect for the great painters who wove the fabric of Canadian national identity. He became fascinated with nature, and this encouraged him to explore the world around him through drawing, painting and photography from an early age.

Living in a country like Canada, with its vast untamed wilderness, dramatic scenery, diverse geology and four seasons, allowed the artist to develop a profound connection with, and appreciation of, the forces of raw nature. His landscape work directly conveys his deep respect for nature and its subtle, yet powerful, beauty and offers unusual and personal glimpses of breathtaking scenery.

Christidis' body of work is the product of a lifetime of refining his creative approach which is documented and illustrated in a sixty-page, freely available ebook on MichaelCArtist.com. From his formal studies of design, art history, still photography and film, to years of experimentation with mediums, techniques and aesthetics and professional work experience, to his writings about artistic intent and creativity, Christidis has left no stone unturned in his quest for a cultivated methodology that he can truly call his own.

Christidis has exhibited in Canada and the United States.

All images copyright ©2024 Michael Christidis
All Rights Reserved

Contact: info@michaelcartist.com

Pricing and availability as indicated on [website](#).